

**Rice statistics**

- INERA staff were trained in nationally representative rice statistics survey methodologies. Reliable evidence-based data on rice are available for the country and have been used by the Government of Burkina Faso in developing its NRDS and other interventions in the rice value chain.
- The 'dot sampling' method for collecting rice production statistics has been piloted in Burkina Faso.
- National partners were trained in the use of the MLax software developed at AfricaRice to facilitate monitoring and evaluation of research activities.

**Policy advice**

- Burkina Faso contributed actively to the development of policies resulting in key investments made by farmers, governments, the private sector and the donor community following the 2007–2008 global food crisis, which resulted in rapid growth in rice production in sub-Saharan Africa (8.4% per year) from 2007 to 2012.

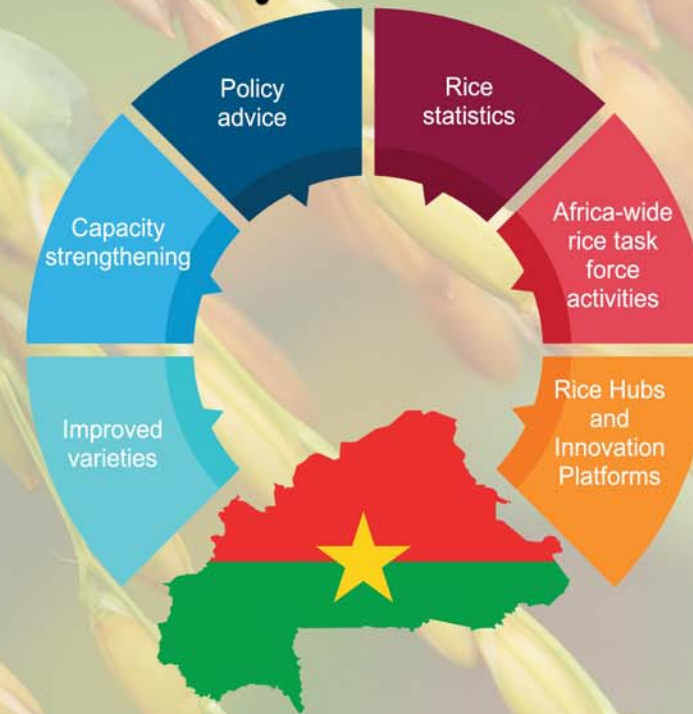
**Africa-wide rice task force activities**

- Burkina Faso has been an active member and benefited from the activities and funding of the six Africa-wide Rice Task Forces coordinated by AfricaRice – Breeding, Agronomy, Gender, Mechanization, Policy, and Processing & Value Addition.
- The Task Forces have provided a unique opportunity for Burkinabe scientists to interact and partner with their counterparts from other AfricaRice member countries.
- Funds contributed to Burkina Faso through the Task Forces have complemented government allocations significantly and ensured the continuation of research and the training of scientists and value chain actors.

**Rice Hubs and Innovation Platforms**

- Six rice sector development hubs were identified by INERA – Boucle du Mouhoun, Hauts-bassins, Cascades, Centre-Est, Est (irrigated ecology); Centre-Est, Est, Hauts bassins, Boucle du Mouhoun, Cascades, Sud-Ouest (rainfed lowland); Hauts bassins, Boucle du Mouhoun, Cascades (upland).
- Hubs serve as field laboratories where research outputs and products are being tested, adapted and integrated – with feedback provided to researchers on technology performance. With the Rice Breeding Task Force working in the hubs, at least 20 improved rice varieties have been released in Burkina Faso for use by farmers.

# african rice & Burkina Faso



## Burkina Faso-AfricaRice Partnership

June 2017

- ▶ Burkina Faso is a founding member of AfricaRice (ex-WARDA).
- ▶ The Institut de l'Environnement et des Recherches Agricoles (INERA) is one of the most important national partners of AfricaRice.
- ▶ As a member country, Burkina Faso takes part in statutory meetings of the AfricaRice Council of Ministers, which is the Center's highest governing body.
- ▶ Burkina Faso is also a member of the AfricaRice National Experts Committee.

“Rice is global and it is big business. Rice is life in Africa.”  
 -- Dr Harold Roy-Macauley,  
 AfricaRice Director General



### Contributions by AfricaRice to Burkina Faso

- ▶ Between 2009 and 2016, Burkina Faso has benefited from 22 donor-funded projects, coordinated by AfricaRice.
- ▶ AfricaRice, in partnership with INERA, has contributed to boosting Burkina Faso's rice sector in terms of policy and technical advice, improved seed, cropping practices and processing technologies, capacity development and support to rice value chain development.

### Capacity strengthening

- ▶ Between 2009 and 2016, 5 PhD and 9 MSc scholars from Burkina Faso were trained. About 130 researchers and value chain actors have participated in group training.
- ▶ One of the beneficiaries has set up a seed company, NAFASO, which is one of the leading private seed enterprises in West Africa.

### IMPORTANCE OF RICE IN BURKINA FASO

Rice is of economic importance to Burkina Faso, which has excellent potential for growing it, as less than 10% of its 500,000 ha of lowlands have been developed. The country has developed a national rice development strategy (NRDS), which envisages rice cultivation as one of the key levers to achieving food security. Its overall objective is to contribute to a sustainable increase in both quantity and quality of national rice production to meet consumers' needs.

The NRDS incorporates four strategic directions (growth in developed land area, sustainable intensification of rice production, enhanced economic benefits from rice production, and research – outreach, expert advice, capacity building of stakeholders) with accompanying action plans.

In Burkina Faso, rice is produced in three ecologies: rainfed lowland (62%), irrigated lowland (23%), and rainfed upland (15%). Average yields are 4-7 t/ha in the irrigated lowland system due to double cropping. Average yields are 1.3 t/ha in the non-developed rainfed lowlands, 2.5 t/ha in the developed rainfed lowland (with a potential for 4 t/ha), and 1 t/ha in the strictly rainfed upland ecology.

In 2014, the country produced 347,500 t of paddy rice on 144,260 ha with an average aggregate yield of 2.41 t per ha. Total paddy production has been improving (at an annual rate of 13% during 2001-2014) thanks to several programs and policies directed at boosting the rice sector.

The estimated average annual rice consumption during 2001-2013 was 281,770 tons with an annual growth rate of 3.8%. Only 47% of consumer needs are met with imported rice. This underscores the necessity for further efforts to achieve the targets of the NRDS. In line with its strategy to boost rice production, Burkina Faso has undertaken a series of research for development activities in partnership with AfricaRice.

#### Rice Statistics for Selected Indicators

Indicator	2005	2010	2013	2014	Average 2001 - 2014
Paddy production (t)	93,516	270,658	305,382	347,501	181,256
Area harvested (ha)	52,563	133,737	138,852	144,261	85,873
Yield (t/ha)	1.78	2.02	2.20	2.41	2.06
Milled rice consumption (t)	186,297	328,107	362,981		281,769
Import (t)	197,609	240,211	439,080		234,772
Import value (million US\$)	52.1	63.7	125.1		64.8

## africarice & Burkina Faso



### Burkina Faso-AfricaRice Partnership: Achievements and Impacts

#### Improved varieties

- A range of improved varieties, covering the three main rice ecologies in Burkina Faso, have been developed through research, some of which are listed below:

No.	Improved variety	Share of area (%)	Estimated cultivated area (ha)
1	FKR 19/TOX 728-1	27.15	30,677
2	TCS 10	23.47	26,519
3	FKR 62N	3.25	3,672
4	FKR 8/IR 8	2.77	3,130
5	FKR 28/ITA 123	2.16	2,441
6	FKR 60N	1.94	2,192
7	FKR 56 N	1.76	1,989
8	FKR 41/WAB 56-125	1.73	1,955
9	FKR 14/4418	1.41	1,593
10	FKR 43/CNA 6675	1.11	1,254
11	FKR 29/1215-1-5	0.59	667
12	FKR 16/4456	0.5	565
13	FKR 18/SC 27	0.37	418
14	FKR 3/IRAT 10	0.12	136
15	FKR 17/FKR 17	0.12	136
16	FKR 33/1195-5-2	0.12	136
17	FKR 45 N	0.08	90
18	FKR 44/IR 13240-108-2-2-3	0.06	68
19	FKR 49 N	0.04	45
20	FKR 9/FKR 9	0.03	34

- Seven new rice varieties were released in Burkina Faso in 2013 (2 drought-tolerant upland varieties and 5 iron-toxicity-tolerant lowland varieties).
- High-yielding rice hybrids (10–13 tons per ha), developed by AfricaRice and its partners, are being evaluated with public and private seed companies in Burkina Faso.